

CONNECTING DONORS WITH THE COMMUNITY'S NEEDS



A GROUP EFFORT

The Pittsburgh Foundation **2004**
ANNUAL REPORT

from the Chairman and President

Good neighbors make great communities. Our 2004 Annual Report serves as a tribute to the people of Pittsburgh, their generosity and their enduring, selfless and dedicated commitment to our community.

Within this report, we feature some fine examples of how the citizens of Pittsburgh have responded to our community's critical needs.

The benevolence of our donors has continued to enhance the quality of life for a great many individuals, families and organizations. They have made our community healthier and stronger in so many ways. They have provided relief, stimulated hope and facilitated opportunity each year for thousands. Our donors truly make a difference.

2004 had its hardships. Among them was the closure of Pittsburgh's municipal swimming pools, recreation centers and food distribution sites due to the city's fiscal crisis. Then, on September 17, Pittsburgh was pounded by the remnants of Hurricane Ivan which tore through our neighborhoods leaving devastating floodwaters in its wake. In both instances, the people of Pittsburgh responded magnificently, and at The Pittsburgh Foundation, we were privileged to undertake a central and convening role with other funders, including individuals, nonprofit organizations, foundations, corporations, and the city and county governments.

Most of the pools, recreation centers and food distribution sites were reopened after an intensive fundraising effort (see facing page), and relief programs were organized for individuals whose homes and businesses were damaged or destroyed by flooding (see page 18).

There were many more areas of Pittsburgh's community and across the U.S. that benefited from grants from The Pittsburgh Foundation in 2004. Some are chronicled within this report, and they help to remind us of Pittsburgh's rich heritage as the

birthplace of our nation's philanthropy; our region continues to be blessed with a strong community of nonprofit organizations, foundations and support groups.

That same compassionate spirit resulted in major growth at The Pittsburgh Foundation during 2004. A total of 64 new funds were created, and current donors added 164 gifts to their existing funds.

Combined, new funds, gifts to existing funds and other charitable gifts to the Foundation in 2004 totaled more than \$40 million, a 54 percent increase compared with 2003, and a record in our organization's history. New funds created in 2004 increased the Foundation's assets to approximately \$623 million and took the organization's total funds past the 1,000 mark for the first time.

The Foundation awarded grants of \$20 million in 2004, benefiting a broad spectrum of community life within Pittsburgh and across the U.S.

From unrestricted funds, the Foundation awarded 166 grants, totaling \$9.1 million. From our donor directed funds, a further 1,962 grants were awarded, totaling \$10.9 million. This includes support for a wide range of organizations and institutions, together with scholarships, and grants to aid vital medical research.

All of this has been made possible by the overwhelming generosity of our donors.

On behalf of our community and beyond, we congratulate you and we thank you. We also thank the many individuals, organizations and support groups for their work and partnership to improve the lives of our fellow citizens.

It is truly a group effort.

We bid fond and deeply grateful farewells to three members of our Board of Directors, who retired after completing their terms, Arthur J. Edmunds, Alvin Rogal, and Samuel Y. Stroh. One new member joined our Board of Directors, James C. Roddey. We welcome him, and we look forward to working with him.



William E. Trueheart

PRESIDENT
& CHIEF EXECUTIVE OFFICER



James S. Broadhurst

CHAIRMAN OF THE BOARD

George A. Davidson, Jr., was elected Chairman of the Board of Directors of The Pittsburgh Foundation in March 2005 following the retirement of James S. Broadhurst who served with distinction as Chairman for five years and as a Board member since 1995. George, who is the retired Chairman of the Board of Dominion Resources, Inc., one of the nation's largest energy companies, has also served with distinction as a Director of the Foundation since 1990.



Community joins to 'save our summer'



JERRIN & JOURIE

Joy gleamed from the faces of thousands of Pittsburgh children, their parents and friends as they enjoyed the facilities of the city's municipal swimming pools and recreation centers during the summer of 2004.

But it almost didn't turn out that way.

A fiscal crisis forced the closure of Pittsburgh's pools and recreation centers - many of which also served as food distribution sites - threatening to deny many disadvantaged children and families a safe, healthy and happy summer.

That was the signal that spurred The Pittsburgh Foundation into action, in partnership with Pittsburgh philanthropist and accomplished community leader, Elsie Hillman. Elsie is also a former Vice Chair of the Foundation.

A volunteer fundraising effort resulted in a tremendous outpouring of support from corporations, foundations and private individuals. Almost \$1 million was raised in seven weeks, enabling the reopening of 16 pools, recreation centers and 12 food distribution sites at strategically determined locations to serve the greatest need.

The initiative became known as the "Save our Summer" campaign. It started with CEOs and foundations, but word quickly spread. Contributions flowed in from individuals who read about the campaign in the newspapers. One local second grader sent in \$5, and another individual donor gave \$10,000.

More children used the 16 reopened pools in 2004 than used the city's 31 pools that were available in the summer of 2003.

The joy seen among the children, their parents and friends, young and old, was captured for posterity by distinguished photographer, Mark Perrott.

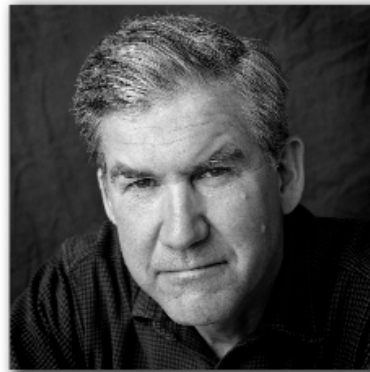
The South Side-based photographer, whose work has graced art galleries and museums across the U.S., took photos of between 1,200 and

1,500 Pittsburghers and distilled these into a collection of 18 portraits called "Swimmers" that has been on exhibition at the Children's Museum of Pittsburgh.

"It was probably the best and most concentrated photo portrait experience of my entire life," said Mark. "They just showed up: kids, adults, seven-year-olds, 70-year-olds, infants, brothers, sisters, loved ones, families, friends -- it was just terrific."



KYLE



Samples of Mark Perrott's celebrated portfolio of Save our Summer photos are featured on the next three pages, and on the front cover of this Annual Report, which shows Crystal, William and Tim Bell.

save our summer save our summer save our summer

TERRY & JOEY



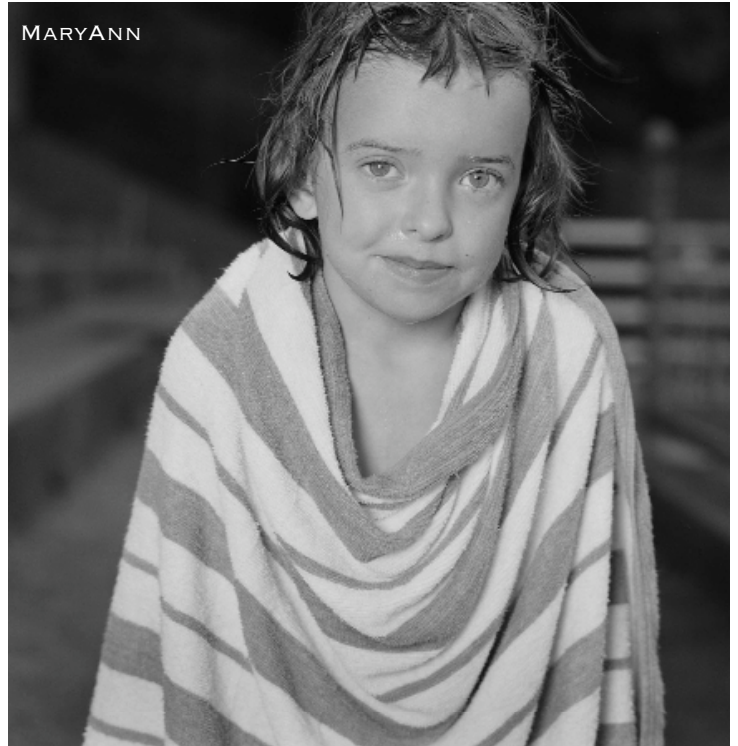
FRANNY



SABRINA
& KAYLA



MARYANN



save our summer save our summer save our summer



donor ◀ achieving educational

Justin M. Johnson, a Superior Court judge, and his wife, Florence, stand inside East Liberty Presbyterian Church.



FLORENCE L. AND JUSTIN M. JOHNSON

Florence L. and Justin M. Johnson had been thinking for years of starting a fund after several conversations with Burr Wishart. When William Trueheart joined the Pittsburgh Foundation, they decided it was time to make good on a commitment they'd made to his predecessor. "We talked to each other about what to do," said Florence, a former school teacher. "We've always been inclined to do something for those less fortunate who had the ability but not the money."

The Shadyside couple decided to help African American youth continue their post-high school educations. Specifically they wanted to help youngsters with ties – whether current or historical – to the West African countries from which many of the African slaves were involuntarily shipped to North America hundreds of years ago.

The couple had traveled to Africa and seen the slave castles where slaves were processed and prepared for the brutal voyage across the Atlantic.

"We're trying to pick people who would have been descendants from the slaves," said Johnson, a Superior Court judge. "One of my

disappointments is the intentional failure of this country to acknowledge the contributions of the slaves over the years."

Some family history had impressed upon Judge Johnson how decisive an injection of money can be to a young person with ambition. "My grandfather moved to Braddock, where my father was one of the first three African Americans to graduate from Braddock High in 1912. My grandfather sold the only land he had to pay for my father's freshman year at Harvard Law School. Dad wouldn't have been a lawyer for 49 years without that help. That's what we're trying to do for others."

"It's been a really good situation," Florence said. "We met some of the recipients at a little affair a month ago - nice looking, with a gleam in their eyes. I've been extremely pleased. The Foundation goes all out for you to make it worthwhile."

"Everything about the experience has been positive," Judge Johnson said. "Top quality people." The Johnsons started the Oliver L. Johnson and William H. Lester Families fund three years ago.

"... WE HAVE AN OBLIGATION TO SHARE THOSE GIFTS WHICH HAVE BEEN GIVEN TO US AND REALLY WEREN'T OURS IN THE FIRST PLACE AND WON'T BE OURS IN THE END. I DON'T THINK WE'RE DOING ANYTHING SPECTACULAR BY SHARING GOD'S GOODNESS WITH OTHERS WHOM WE MAY NOT KNOW AND WE MAY NOT MEET BUT WHO ARE PART OF GOD'S LARGER FAMILY."

excellence & equity ▶ grantee



Linda L. Croushore, left, of the Mon Valley Education Consortium oversees an education leadership meeting at Steel Valley High School.

THE MON VALLEY EDUCATION CONSORTIUM

In educational meetings across the Mon Valley, though the room may be crowded and space limited, there is one chair that always sits empty. And as the participants struggle to address some of the community's most critical and difficult problems, they must also consider that empty chair and a question: Who is not at the meeting who could help solve the problem?

That spirit and commitment to public engagement lies at the heart of what began in 1985 as a pilot project in McKeesport that The Pittsburgh Foundation helped get off the ground. Its mission was to improve school achievement. Two years later, 19 school boards asked if they could share in the benefits, and the Mon Valley Education Consortium was created. The idea is ultimately a simple one, said executive director Linda L. Croushore, who has a doctorate in education. Help a community realize that its best and most important asset – the key to its future economy – is its children, and that every child must achieve.

Specifically, the Consortium helps school districts build a decision-

making infrastructure that includes key people in the school community: board members, superintendent, business manager, union president, principals and peer-selected teacher representatives. At monthly meetings, this forum works together to identify and address the district's key issues.

The Pittsburgh Foundation's grant of \$100,000 from the Henry C. and Belle Doyle McEldowney Fund is specifically directed to help six districts: McKeesport, Steel Valley, East Allegheny, Clairton, Duquesne, and South Allegheny. The Foundation's goal is to increase achievement in those districts. And since the beginning of state testing in 1995, Croushore said, the improvement has been steady and continuous.

The Consortium is proud that its overhead is only eight percent. "We really work hard to use the money that is raised on behalf of children," Croushore said. She also noted that some \$50 million has come into the region through the Consortium in grants from individuals, local foundations and some state funds.

“USUALLY, IF A SCHOOL DISTRICT HAS ANY DECISION-MAKING TEAM AT ALL, IT’S THE ADMINISTRATORS. THESE COLLABORATIVE FORUMS ALLOW ALL COMPONENTS OF THE SCHOOL COMMUNITY TO BE EQUAL PLAYERS IN SOLVING PROBLEMS AS A TEAM...IT’S EXCITING WORK. AND BIG WORK. SOMETIMES WE’RE TIRED, BUT IT’S ALWAYS WORTH DOING.”

✧ LINDA L. CROUSHORE ✧

donor ◀ supporting families &

Norine Minion started a fund after seeing a Pittsburgh Foundation billboard picturing a little league baseball field. A huge baseball fan, Minion says “The City of Pittsburgh is my family.”



NORINE MINION

It was five years ago that Norine Minion saw a billboard at Greater Pittsburgh International Airport. She was heading back to New Mexico after a visit to her home town, and the message from The Pittsburgh Foundation struck deep. “Put your money where your heart is.”

“Well I’m a huge baseball fan and that billboard had a picture of a little league baseball field overlooking Downtown,” she said. “Even though I’ve been gone for over 20 years, I still get extremely homesick. My heart is definitely in this city.”

She returned to Albuquerque and told her husband, a Colorado native, they should start a fund. They’d been looking for a way to give charitably, and with the stock market being high, the timing was perfect. So was the name they settled on – We Are Family Fund. Beyond deriving its name from the success of the 1979 baseball team, “The City of Pittsburgh is my family,” Norine said. In addition to the Pirates, her actual family still lives in the area.

The Minions looked at the Foundation’s Web site and set up a meeting for their next visit back. Ironically, Norine then realized that when she was a senior at Springdale High School she had received a scholarship from The Pittsburgh Foundation. The Ulinger Trust Scholarship, based on need and performance, had been a significant help. “It was like, wow! This has come full circle. It’s meant to be.”

They started their fund with \$12,000 and have added another \$25,000 since. They have asked that family members donate to the fund instead of giving them Christmas gifts.

Norine’s husband Greg likes the area’s iron and steel image and wants to help maintain it. As a consequence, they’re focusing partly on vocational- and technical-related educational grants. Recalling the \$500 grant she received in high school, Norine said that, “psychologically, it was huge. I’m just hoping this gives other students the same spark and lets them know that someone else believes in them.”

“WE’RE LOOKING TO MOVE BACK. GREG QUALIFIES FOR RETIREMENT IN FEBRUARY, AND HE KNOWS MY PASSION FOR PITTSBURGH IS TOO STRONG. I JUST WISH THE CITY OF PITTSBURGH REALIZED WHAT IT HAS BACK HERE AND QUIT THE SELF DEPRECIATION. TAKE SOME PRIDE IN IT AND KEEP IT CLEAN AND MOVE FORWARD.”

NORINE MINION

youth development ▶ grantee



Ruth Wooding and her granddaughter, Shalaisha Wooding, receive help from ACORN's Financial Justice Center.

ALLEGHENY COUNTY ACORN

Over the past several years, workers at a tiny nonprofit that helps the poor were witnessing a disturbing trend. Mortgage foreclosures seemed to be on a precipitant increase. Their research into the matter sounded an alarm: from 1,142 in 1995, the number of foreclosures reached 4,147 in 2003 and 7,852 by September 2004.

The reasons were many. Credit had been eased allowing many people who would not have received loans to qualify. With interest rates at historic lows, many people refinanced time and again, taking on staggering amounts of debt. And in Allegheny County, that coincided with reassessments that dramatically increased tax burdens for poor neighborhoods.

But to the eye of Maryellen Hayden, a more fundamental problem was at work. Many of the mortgage holders lacked what she calls "the financial literacy" to understand their situation and to take advantage of benefits that could help them. Hayden is founder of the local Association of Community Organizations for Reform Now (ACORN), a national group that helps the poor in many ways. She formulated a plan for ACORN to establish a Center for Financial Justice to help families avoid mortgage foreclosure, take advantage of the Earned Income Tax Credit and, most

importantly, develop the financial skills to manage their affairs. And when ACORN marched on the sheriff's office to protest foreclosures, Jane Downing and The Pittsburgh Foundation noticed. In order to get the Center under way, the Foundation approved a two-year grant of \$202,000 from The Truxall Fund and, primarily, the William Hodge Burchfield and Thomas Howell Burchfield Fund.

"It's all inter-related," Hayden said. "If you want to stop foreclosures, you have to help these people in a number of ways. A lot of financial companies are taking advantage of them." The Center, located in East Liberty, helps endangered homeowners file a 30-day stay on foreclosure proceedings. They analyze the situation and find the best remedy. If a predatory loan is involved, they work with the banks to reduce the interest rate and/or the terms of the mortgage. They teach basics, such as using a checking account instead of a check-cashing company. And they help families prepare their taxes and learn what tax breaks they can use.

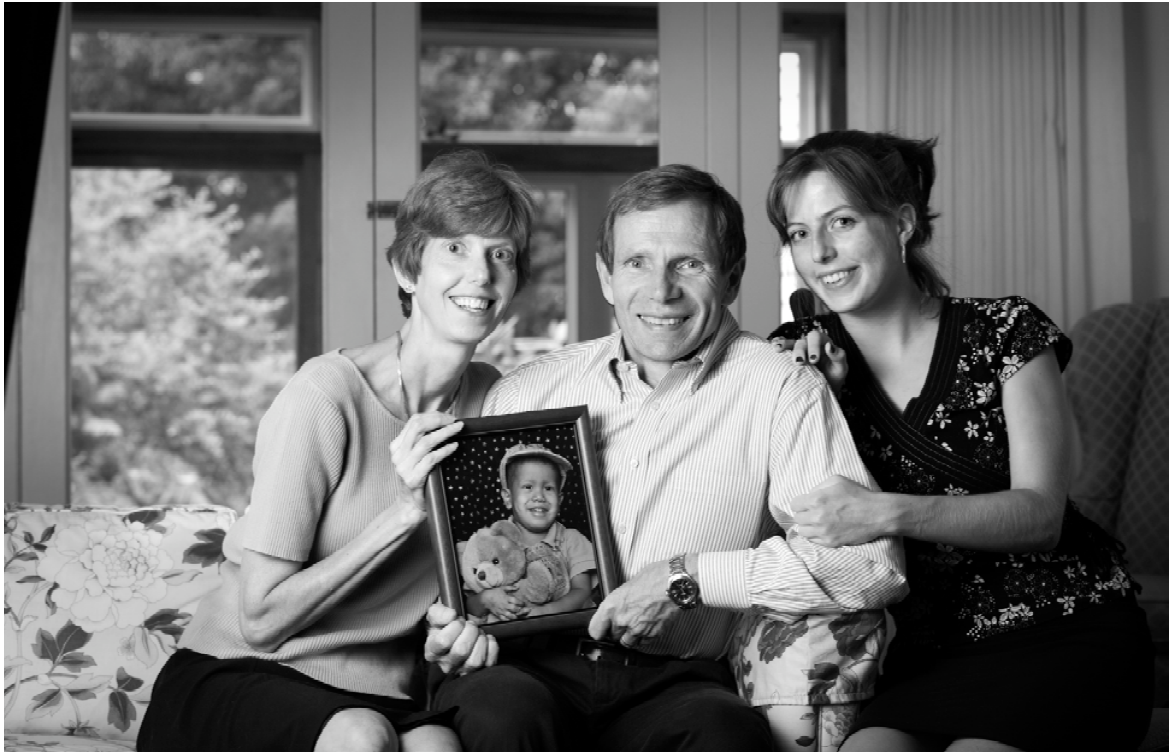
In 2004, they saved 250 families from foreclosure. In 2005, the numbers have been increasing. And word is spreading. Clients are calling for help from surrounding counties.

"I FEEL LIKE I'VE GOT FIVE FINGERS IN FIVE HOLES IN FIVE DIKES. WHEN JANE DOWNING CAME TO OUR DOOR, IT WAS A MIRACLE. SHE AND THE PITTSBURGH FOUNDATION WERE LIKE AN ANGEL OF MERCY TO US. ... OUR ORGANIZATION DOESN'T JUST PAT PEOPLE ON THE HEAD AND SEND THEM ON THEIR WAY. WE EMPOWER THE PEOPLE."

✧ MARYELLEN HAYDEN ✧

donor ◀ reducing disparities in

Jocelyn and Rob Sanders and their teen-age daughter, Liz, discuss what organizations to support. The couple wanted to help children and families after their adopted son, Christopher, (in the framed photograph) died from cancer in 1997.



JOCELYN AND ROB SANDERS

In 2002, Jocelyn and Rob Sanders sat down to consider their financial future. After many years, Jocelyn was retiring from Alcoa, where Rob still works. Their financial planner suggested they consider opening a fund with The Pittsburgh Foundation, and the reasons were compelling. They'd long been involved in charitable giving but never in a focused way. And receiving company stock meant they would be facing some tax liability. "It was an opportunity to do something with the stock that was good for taxes and good for the community, and we decided to take the plunge," Rob Sanders said.

The New Kensington couple knew they wanted to help children and families, either through education or healthcare. As Jocelyn said, "Charities that help children have an opportunity to change their lives and benefit them for years to come."

Part of their impetus in that direction came from the 1997 loss of their son to cancer. Christopher, whom they had adopted from Honduras, was three years old. The Sanders knew the needs associated with such a situation, and they have given to Children's Hospital

for cancer research, including a program that supports children with extremely dire illnesses.

Unlike some donors who recommend gifts to many of the same groups each year, the Sanders make decisions as the desire strikes them. They've found The Pittsburgh Foundation to help in that process. For instance, they knew they wanted to support a charity that did work in Central America, but they were also looking for a group located closer to home. The Foundation located Global Links, a local charity that collects usable but discarded medical supplies, repackages them and ships them to the Third World. It was a perfect match.

That doesn't always happen though, and, as Jocelyn said, "If we don't find something we want to support by the end of the year, the money just rolls back into the fund. So there's not a hard pressure to make a decision by a certain date. That's been good for us. Rob and I tend to build our list of charities from year to year. That's why we've really appreciated the informational programs and sessions the Foundation holds on community issues we wouldn't have been aware of."

"THE WAY THAT THE PITTSBURGH FOUNDATION'S SET UP, AS WE MOVE ON LATER IN LIFE, WE'LL BE IN A POSITION TO ADD MORE TO THE FUND. AND WE'VE BEEN INVOLVING OUR DAUGHTER IN OUR DECISION-MAKING PROCESS ABOUT WHAT ORGANIZATIONS TO SUPPORT. ... IT'S OUR PLAN SOMEDAY THAT, WHEN WE'RE GONE, SHE'LL WORK WITH THE PITTSBURGH FOUNDATION TO ADVISE ON THE FUND."

health outcomes ► grantee



Volunteer Florence Wetzel helps Carver Hall resident Amanda Williams make a bracelet at a health fair sponsored by Allegheny County's Area Agency on Aging.

AREA AGENCY ON AGING

An unusual example of innovative partnering can be found in what is called the Senior Living Enhancement Program, sponsored by the Allegheny County Department of Human Services' Area Agency on Aging, the Allegheny County Housing Authority, the City of Pittsburgh Housing Authority, and The Pittsburgh Foundation.

The idea of the program is to help residents in senior high-rise buildings take a more active role in their community, lives and health. "We want to break the isolation and get practical information into their hands so that they can take greater charge of their own well being," said the Area Agency on Aging's Bill Graham. "Providing residents with the opportunity to be active and involved is the goal."

He likened the program to a four-legged stool. The first is providing social and recreational opportunities. The second is social service coordination. The third is nursing, both health promotion and disease prevention and intervention. And the fourth is community building – empowerment in terms of self advocacy and group advocacy.

Twelve of the senior high-rise communities in Allegheny County and

twelve in Pittsburgh are involved in the program. For the county program, Lutheran Services Society provides the social recreation and social service coordination. Northern Area Multi-Service Center provides the nursing service. In the city, Ursuline Services provides social service coordination. All of the programs follow the 10 Keys to Healthy Aging, developed by the University of Pittsburgh's Center for Healthy Aging.

The program began in the county in August 2004, with financial commitments from the Area on Aging, the County Housing Authority and The Pittsburgh Foundation. The Foundation's two-year investment of \$920,152 for service delivery, resident empowerment and evaluation launched the program in the county and helped to start the program in the city. Support comes from the Emily Kelly Roseburgh Memorial Fund, the Raymond R. and Edna Gies Artz Fund, the Margaret Miller Fund, and the Helen E.H. Johnston Fund.

As Graham said, "We're really looking at this as a new endeavor." The 24-month demonstration project has the potential to affect more than 2,400 lives.

"WE'RE ABOUT A YEAR INTO IT, AND WE'RE MAKING MID-COURSE ADJUSTMENTS. WE'RE THRILLED ABOUT THIS PROGRAM BECAUSE IT REALLY AND TRULY IS CUTTING EDGE IN THE WAY IT'S OPERATING. IN TERMS OF THE RESIDENT ENGAGEMENT, IT'S NOT A PROGRAM WE'RE TRYING TO FIT PEOPLE INTO BUT ONE WE'RE DESIGNING TO FIT THEIR NEEDS. AND IT'S GOING TO ALLOW PEOPLE TO AGE IN PLACE — TO STAY IN ONE SETTING ESSENTIALLY."

🌀 BILL GRAHAM 🌀

donor ◀ fostering economic

Rosemary Trump organized and led the 14,000 members of local 585 of the Service Employees International Union.



ROSEMARY TRUMP

The history of Pittsburgh is in many ways the history of America, and not many people have as clear a view of that as Rosemary Trump.

For 27 years, her vantage point was from the top of one of the region's most powerful unions. She organized and led the 14,000 members of local 585 of the Service Employees International Union, and she knows what it means to be free to organize and bargain collectively. She also knows how and where those rights were won. They were won in part in 1892 in Homestead, where 26,000 members of the Amalgamated Association of Iron, Tin and Steel workers banded together to demand better conditions from the Carnegie Steel company. Their famous battle with Pinkerton guards left many dead but set the stage for continuing efforts to organize workers.

"It really created a battlefield of hallowed ground," said Trump, who is a board member of the Steel Industry Heritage Corporation and the Battle of Homestead Foundation.

With the fund she started last year, she wants "to help preserve our

heritage around the steel industry and labor issues. Homestead is one of the 10 most important sites in shaping America in terms of freedom of speech, the right to assemble and the quest for the American dream."

Preserving that heritage can also become a potent economic development tool for the region, Trump believes, attracting tourists to the cradle of trade unionism. She started the Rosemary Trump fund with \$15,000, though a fund can be started with as little as \$10,000. "Sometimes people think that in order to set up a charitable trust you have to be a millionaire. Well, you don't," Trump said.

"And The Pittsburgh Foundation treated me no differently than if I had \$10 million. I just can't say enough about all the interest, cooperation and support I've been given by the Foundation. They give me regular reports, and I'm very happy about it. I can contribute while I'm living, but I'm also able to bequeath some of my estate to this after I'm gone. I would hope that others interested in this subject matter would want to do something similar."

"PITTSBURGH HAS SO MUCH TO TELL REGARDING THE IMMIGRANTS WHO CAME TO WORK HERE. THEIR SACRIFICE REALLY HELPED BUILD THE POSSIBILITY FOR OTHERS TO REALIZE THE AMERICAN DREAM. THEY BUILT THE RAILROAD TRACKS AND CREATED THE STEEL. IT WAS THE LABOR OF OUR ANCESTORS IN THIS AREA THAT REALLY BUILT THIS NATION. THERE WAS GREAT SACRIFICE. I WANT TO HONOR THEIR MEMORY."

development ► grantee



Debby Moses gives a hug to Dina Klavon of Klavon Design Associates.

POWERLINK

In business development circles and news media reports, much attention is paid to encouraging women to become entrepreneurs and start their own businesses. A smaller but perhaps more important niche lies in helping those women who've made it past the start-up phase and are ready to grow their businesses.

This is the realm of PowerLink, a nonprofit that started in 1991, when two businesswomen observed that women who started and ran businesses often don't get to the level men do. While some of that may be choice, in terms of raising a family or not wanting to work long hours, some is due to lack of access to networks, capital and knowledge.

The two decided to provide six advisors to a friend who needed help. The test case worked. And so from 1991 until 2001, all-volunteer PowerLink linked business advisors with business owners. The operation remained small and informal until one of the groups had an encounter with The Pittsburgh Foundation in 2001. The next year, a Foundation grant made the loose group an organization.

"We didn't even have a phone or a computer," said executive director Debby Moses. "For the first 10 years, we were able to touch the

lives of six women business owners in the city. This year, we're moving to 30, and we're really proud of that."

Why would a woman who has \$500,000 in revenue need help? She might be working 60 hours a week and paying herself \$25,000 a year. She may know her product but not how to manage a business. PowerLink provides a team of volunteer professionals who meet with her, look at the bigger picture and help devise strategies for growth.

After the initial grant, it was clear there was great demand and need for that service. The Foundation challenged PowerLink to grow and help more women. After the initial \$135,000 grant in 2001, the Foundation committed to an additional \$175,000 in 2004-2006 from the Women's Industrial Exchange Fund, the Scott Fund, Belle Richards Fund No. 1 and the Lois Tack Thompson Fund.

"Helping 30 people this year, 40 next year and 50 in 2007 is the challenge," said Moses, a veteran of the trust department at Mellon. "It forces us to look inward. Can we do this number?" The group is attacking the challenge, creating spinoff programs and utilizing what Moses said may be their best asset: "Knowing how to do things cheaply."

"IN THE END, WE HAVE MANY GOALS FOR OUR ORGANIZATION. ONE IS TO FURTHER THESE WOMEN AS CEOs AND TO HELP THEM TO START SEEING THEMSELVES AS CEOs. I ALSO HOPE THEIR COMPANIES GET TO THE SCALE WHERE THEY'RE HIRING MORE AND MORE PEOPLE. EMPLOYMENT ISN'T THE MAIN GOAL, BUT IT'S A CLEAR BENEFIT."

DEBBY MOSES

Steve Silberman and his mother, Freda, are pictured at Pittsburgh Symphony Heinz Hall.



STEVE AND FREDA SILBERMAN

When Aaron and Freda Silberman started the Silberman Family Fund 24 years ago, it was a way to continue their support primarily of local musical organizations. The Pittsburgh Symphony was initially the largest recipient, but in time the list of recipients has grown to encompass all sorts of organizations the Silbermans support.

"I got involved in a small way in the mid 1980s," said Steve, son of Freda and Aaron, who died in 1993. "Now my mother and I have organizations that we support annually. Sometimes we'll get together and talk about something new that's piqued our interest and say, 'How do you feel about that?' I can't say it's a terribly formal process."

The Silbermans recommend where the money goes and how much, and the Pittsburgh Foundation takes care of the rest; hiring the money manager, doing the accounting, making the disbursements and keeping the records. The recipients report back about how they're using the

grant money.

"It's been a big help," said Steve. "And it also certainly has enhanced our ability to give. The Foundation's investment policies and guidelines involve a certain discipline about how much to give so that you don't use it up. We have gone beyond some of those guidelines because in some years we've decided to give more. We've dipped into principal a few times, but over the years we've been able to give away a lot more than we put in because of the returns."

Freda Silberman looked back with satisfaction on the 1981 decision to set up the fund. "We had accumulated a little money to work with, and it seemed like a good thing to do. Aaron did have the idea of disbursing the money the way he wanted, and we've been very satisfied with it. It's been a worthy way of putting money aside and having it put to good use."

"MY FATHER WAS A VERY COMMITTED COMMUNITY SUPPORTER, BUT HE DID IT IN A QUIET WAY. HE WAS NOT THE KIND OF GUY WHO JUST RESPONDED TO SOLICITATIONS AND SENT OUT A CHECK. HE WANTED TO BE INVOLVED, KNOW WHAT THE ORGANIZATIONS WERE DOING AND HELP. THE PITTSBURGH FOUNDATION HELPED HIM TO DO THAT AND ORGANIZE HIS THOUGHTS ON GIVING."

🌀 STEVE SILBERMAN 🌀



Pittsburgh Opera General Director Mark Weinstein, standing in The Benedum, helped the organization grow.

PITTSBURGH OPERA

When he came to town to take over the Pittsburgh Opera, General Director Mark Weinstein realized his first job was to right a vessel that, financially, was listing badly to the side. Structural deficits threatened the company and its productions. The choices were two: cut or grow. Ultimately, by essentially becoming more important to the community it served, the Opera was able to grow its way out of its problems in a well-documented and exemplary nonprofit turnaround.

With a strong financial base, the next challenge was to focus on the quality of the programs. That challenge in short order was condensed to a single goal of “artistic excellence.” But what does that mean? For the management team at the Opera, it meant taking on a three-step process: critically assessing their organization and offerings; analyzing what they had to change; and executing those changes.

“Taking a critical look at who we were was hard to do,” said Weinstein, who focused the leadership triumvirate of himself, artistic director Christopher Hahn, and musical director John Mauceri on the task. “We found several weaknesses.” For example, the team bench-

marked itself against other cities and saw that, while Pittsburgh Opera's spending on soloists 10 years ago lagged that of other cities a little, the gap had grown to be considerable. And that translates directly to quality.

“All things being equal, with good taste, the more you pay the better you get,” Weinstein said. “So we decided to invest in the voices on stage. And we decided to get more consistent casting, not just one superstar and 12 students. We also wanted to bring different types of productions here and attract younger audiences.”

The changes were expensive, but they were at the core of improving the Pittsburgh Opera. And they represented the central result of the artistic excellence campaign, which many groups supported, including The Pittsburgh Foundation with, most recently, a two-year, \$200,000 grant from the Charles H. Spang Fund; the William Christopher and Mary Laughlin Robinson Fund; the Scott Fund; the Samuel and Carrie Arnold Weinhaus Memorial Fund; and the Henry C. and Belle Doyle McEldowney Fund.

“A GROUP OF US SAT DOWN AND TRIED TO DEFINE ARTISTIC EXCELLENCE. AND FINALLY JOHN MAUCERI STARTED TALKING ABOUT THE FEELING HE GOT AT THE OPERA, MAYBE 10, 12, 15 TIMES IN HIS LIFE WHEN A CHILL WENT THROUGH HIS BACK... AND EACH OF US SAID, 'YES, YES.' ... WHAT WE'RE TRYING TO DELIVER IS THE POSSIBILITY OF THAT TRANSCENDENT MOMENT WHERE THE MUSIC ENTERS YOUR SOUL AND MAKES A DIFFERENCE IN YOUR LIFE.”

MARK WEINSTEIN

advancing the arts ▶ grantee

Barbara Luderowski and Michael Olijnyk stand in a permanent display at the Mattress Factory.



THE MATTRESS FACTORY

When the Mattress Factory plans an exhibit with installation artists from other countries, logistical difficulties arise. When they planned a show with Cuban artists, however, the entire enterprise was a logistical difficulty. The U.S. State Department wouldn't let the artists come to Pittsburgh. And the Mattress Factory wasn't allowed to pay the artists.

The Mattress Factory team started looking for solutions. Though the artists weren't given visas to come to Pittsburgh, the gallery staff could go to Cuba, which they did twice. And although they could not pay the artists, they discovered they were allowed to purchase art.

"It took six months of consulting to make it all legal," said Mattress Factory Executive Director Barbara Luderowski.

"All of it was done over the Internet. And we were dealing with a curator who wasn't allowed into the country but was allowed into Toronto. So we made trips back and forth to Toronto." And they worked over the Internet to determine the nature of the installations.

"They sent images back and forth. And the interesting thing to me is that ability to be creative and fluid maintained itself through the

technological process." For the installations, the Cubans guided the hands of the Mattress Factory staff. "It was as if we were an extended hand from a robot," Luderowski said. "It was a fabulous show."

The show opened in 2004 and closed in the spring of 2005 and featured 12 Cuban artists.

The Pittsburgh Foundation's \$50,000 grant came from the Ray H. Kohl Fund, the Edgar J. Kaufmann Charitable Fund, the A. Sanford Levy and Hasele Deutsch Levy Fund, the Lawrenceville Neighborhood House Fund and the Frank S. McClintock Fund.

The only major disappointment was only one artist could see the show. He came to Pittsburgh after attending a New York show, for which he had permission. In his Pittsburgh installation, the visitor walks to a five-foot square cube. From a speaker comes a quiet voice: "Yes" It's followed by a much louder, authoritative "No!" Upon seeing his actual piece, the artist had tears in his eyes. "There is such a tight knit group of artists in Cuba, and they all know the unrequited dreams," Luderowski said.

"I'M DEEPLY GRATEFUL TO THE PITTSBURGH FOUNDATION FOR SUPPORTING IT. IT WAS A POLITICAL HOT POTATO. THEY WERE WILLING TO TAKE IT ON AND LET US RUN WITH IT AND TO GIVE VOICE TO A WHOLE COMMUNITY THAT DOESN'T HAVE A VOICE IN AMERICA. AND HOW IMPORTANT IT IS TO HAVE A FOUNDATION THAT RESPONDS QUICKLY. THEY DON'T HAVE STRINGS ATTACHED. THEY BELIEVE IN YOU. THAT MAKES US DEEPLY GRATEFUL."

Establishing a Fund

Since 1945, The Pittsburgh Foundation has been connecting its generous donors to the critical needs of the community. Donors who have established funds through the Foundation can support virtually any area of charitable interest in Pittsburgh, or anywhere in the United States. Because the Foundation is a public charity, donors benefit from significant tax advantages.

More than 1,000 individuals, families and organizations have established funds at the Foundation, ranging from \$10,000 to \$39 million. In 2004, more than \$20 million in grants was awarded to a vast array of organizations, industries, Hurricane Ivan Flood relief; scholarships and medical research in a variety of fields, based on donor's interests.

Grant making at the Foundation

Throughout its history, The Pittsburgh Foundation has sought to meet the changing needs of our region. Our purpose is to focus on the people of our community through engaged grant making and strategic partnerships with other organizations. We provide grants to a wide arena of educational, social service, economic development, health-related and cultural organizations.

Current unrestricted grant making (from the "Community Fund") is made in five Targeted Areas for Impact: achieving educational excellence, supporting families, children and youth; fostering economic development; reducing disparities in health outcomes;

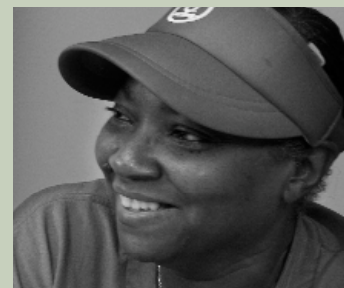
and advancing the arts. We believe a targeted approach to philanthropy can have a greater positive impact on our community.

The Foundation also provides grants through such initiatives as the Multicultural Arts Initiative, the Beverly Jewel Wall Lovelace Fund for Children's Programs, scholarships and medical research in a variety of fields, based on donors' interests.

We recognize that all of our resources are the direct result of generous gifts from our donors. We actively seek innovative, important programs that match our donor's philanthropic goals.

Expertise

The development and donor services staff of The Pittsburgh Foundation have the experience and the expertise to assist donors in establishing funds and in structuring each fund to realize the important tax savings that result from charitable giving. Our experienced grant making staff has broad knowledge and understanding of the needs of the community and can assist donors in ensuring that their charitable goals are met.



MISSION STATEMENT

THE PITTSBURGH FOUNDATION WORKS TO
IMPROVE THE QUALITY OF LIFE IN THE
PITTSBURGH REGION BY EVALUATING
AND ADDRESSING COMMUNITY ISSUES,
PROMOTING RESPONSIBLE PHILANTHROPY,
AND CONNECTING DONORS
TO THE CRITICAL NEEDS OF THE COMMUNITY.

Hurricane Ivan flood relief ◀ initiatives

Corrie Spellman helps as Maureen Wilson cuts wood in the rebuilding of Margie Blumer's House in Tarentum.



HOSANNA INDUSTRIES

When the rain came in September 2004 and the steady downpour of Hurricane Ivan lifted floodwaters all around Pittsburgh, Donn Douglas Ed waited and watched. The native of Johnstown, Pa., knew about flooding and the devastation that came in its wake. And as the founder of Hosanna Industries, which builds and repairs homes for the poor, he was doubly poised for action.

Ed waited two weeks for a plan to emerge. Then, he set to work drawing up his own strategy. "I estimated there were 5,000 low and very low-income households in the region who'd been hurt," said Ed, a Presbyterian minister who started Hosanna in 1990. "We knew we didn't have the capacity to help 5,000, but I felt it was realistic, though a jump, that if the Lord provided the resources, we could contemplate helping 500 families."

He put forth his report and proposal, and his group immediately set to work helping families who were out of their homes. "This was an emergency," Ed said. "This was no ordinary business. I was asked to come to a meeting Downtown at The Pittsburgh Foundation. County Executive Dan Onorato was there, and so were the other foundations.

They really collaborated. It was late in the year, and most of their grants had been given. But they really came through." By Thanksgiving, about \$1.5 million came in from foundations and other sources.

The Pittsburgh Foundation contributed \$250,000 through grants from the David and Eleanor Macferron Fund, the Mortgage Escrow Interest Fund, the Richard K. Means Neighborhood Building Fund, the S. Clarke and Marie McClure Johnston Memorial Fund, the Walter S. Meyer Memorial Fund, the Gertrude E. Paff Memorial Fund, the Sarah and Goldie Wolfe Fund, the Allan R. and Helen R. Herlehy Memorial Fund and the Lois Tack Thompson Fund.

Hosanna is working in the hardest hit areas: Harmony, Zelienople and Evans City; Sharpsburg, Etna and Millvale; Oakdale, Bridgeville and Carnegie; and a little in Aliquippa and Tarentum. "We're running between six and nine jobs per week," Ed said.

Hosanna currently has under 20 paid field workers working with volunteers. Since last fall, 4,500 volunteer days have been logged, 233 projects have been completed and about half the money – \$750,000 – has been spent.

"... THE GRATITUDE IS OVERFLOWING. OCCASIONALLY WE RUN INTO SOMEONE WHO IS IN SO MUCH GRIEF BECAUSE OF WHAT THEY'VE LOST THAT THEY'RE ANGRY. THEY'RE NOT EASY TO WORK WITH, BUT THAT'S PART OF OUR CALLING. BUT THE VAST MAJORITY ARE ABSOLUTELY ELATED AND THRILLED THAT TOTAL STRANGERS ARE COMING IN ON BEHALF OF THE SPIRIT OF GOOD WILL IN THIS REGION."

► Restoring native plant life



Mary Beth Steisslinger, left, works with volunteers to remove Porcelain Berry Vine from the Panther Hollow section of Schenley Park.

PITTSBURGH PARKS CONSERVANCY

Aside from the restorative and recreational opportunities they offer, regional parks are also a place where visitors can come and see what is distinct about an area's plant and animal life. In Pittsburgh, however, that distinctiveness has been endangered by invasive species of plants that have taken over and wiped out many native varieties.

Repairing that damage and restoring native varieties is an expensive and laborious process, given the amount of local parkland. When the Pittsburgh Parks Conservancy came to The Pittsburgh Foundation seeking help for restoring the Panther Hollow section of Schenley Park and Snyder's Point in Riverview Park, the answer was "Yes." The Foundation approved a \$115,705 grant from the Peaceable Kingdom Fund.

"It takes a lot of time and effort on the part of many, many volunteers," said Mary Beth Steisslinger, the Conservancy's ecological restoration coordinator. "And we have all sorts of groups working with us on this project from student conservation groups on one hand to

Deloitte and Touche on the other."

The trouble, according to Steisslinger, is that at the turn of the 20th century, people wanted to see exotic plants. Of the many species that were brought here, about one percent became a problem. Such invaders are genetically aggressive and, if conditions are right, they can take an area with 40 to 50 species down to three or four in a few years, Steisslinger said. "We've learned that, in the last decade, invasive plants have taken the No. 1 spot – from development – in terms of loss of habitat world wide."

At the local parks, the biggest problem species are the Porcelain Berry Vine from Asia, Japanese Knotweed and a few trees – Ailanthus, which is sometimes called the Pittsburgh Palm and the Norway Maple. The Conservancy does much of the work itself but also contracts for some heavier work. It also works with the City Department of Public Works training their staff to help with the process.

"I'M ALWAYS THINKING ABOUT NATURAL AREA RESTORATION. THE GRANT FROM THE PITTSBURGH FOUNDATION IS TREMENDOUS. WE CAN'T AFFORD TO BUY THE PLANT MATERIALS OR THE EROSION CONTROL MATERIALS WITHOUT THEM. IT ALLOWS US TO BRING BACK A LOT OF NATIVE SPECIES."

☞ MARY BETH STEISSLINGER ☞

Who can apply?

Grants are awarded to nonprofit organizations that are defined as tax-exempt under Section 501(c)(3) of the Internal Revenue Code. For all responsive and proactive grants awarded from unrestricted funds, nonprofit organizations must be located within Allegheny County or demonstrate that a significant majority of their population is from Allegheny County. The Pittsburgh Foundation does not award grants from unrestricted funds to individuals, nor does the Foundation generally award grants for annual operating costs, sectarian purposes, private and parochial schools, hospitals, research, endowments, capital costs, equipment, special events, conferences, scholarships, internships or awards.

From time to time, the Foundation undertakes special initiatives that meet critical needs and/or help our donors achieve their charitable interests.

Grant making

The Pittsburgh Foundation comprises several types of funds that award grants in different ways. Our donors have created funds to support designated agencies; to provide scholarships to students who attend specific schools; and to advise on grants subject to the approval of the Foundation's Board of Directors.

The Foundation does not accept proposals for these funds. Other donors have established funds to support medical research, some of which come through a request for proposal process. The guidelines that follow are for grants from our Community funds, in our Targeted Areas for Impact.

Application Process

To request application guidelines, visit our Web site at www.pittsburghfoundation.org, or contact us at The Pittsburgh Foundation, One PPG Place, 30th Floor, Pittsburgh, PA 15222-5401, (412) 391-5122.

✂ Prior to submitting a full proposal, applicants are encouraged to send a letter of inquiry that includes a brief statement about the organization, the proposed project, its intended results and a general idea of project costs.

✂ Program staff will review each letter of intent and contact the organization if additional information is required. The Board of Directors makes final decisions on all grants. Notifications are mailed after each monthly meeting. The Pittsburgh Foundation also accepts the Common Grant Application, but encourages all applicants to first send a letter of inquiry.

Grants Approval

The Pittsburgh Foundation Program and Policy Committee meets once a month to consider grants, and letters of inquiry are reviewed weekly. Grant applications or letters of inquiry received after the timeframe for any given month's meeting will be reviewed the following month.

Grants Awarded in the Following Targeted Areas for Impact

Achieving Educational Excellence and Equity:
Improving public schools' capacity and improving student outcomes.

Supporting Families, Children and Youth:
Increasing family self-sufficiency, and youth development.

Fostering Economic Development:
Achieving upward mobility, and encouraging entrepreneurship.

Reducing Health Disparities:
Assisting African American communities in their goal of eliminating urgent health disparities in greater Pittsburgh.

Advancing the Arts: Building the capacity of small- and mid-sized arts organizations, and encouraging arts outreach in all arts organizations.

Grants are Awarded for a Variety of Purposes

- ✂ Organizational Capacity-Building
- ✂ Systemic Change
- ✂ Improved Service Delivery
- ✂ Planning and Program Development
- ✂ Community-Building

Financial information

COMBINED STATEMENTS OF FINANCIAL POSITION

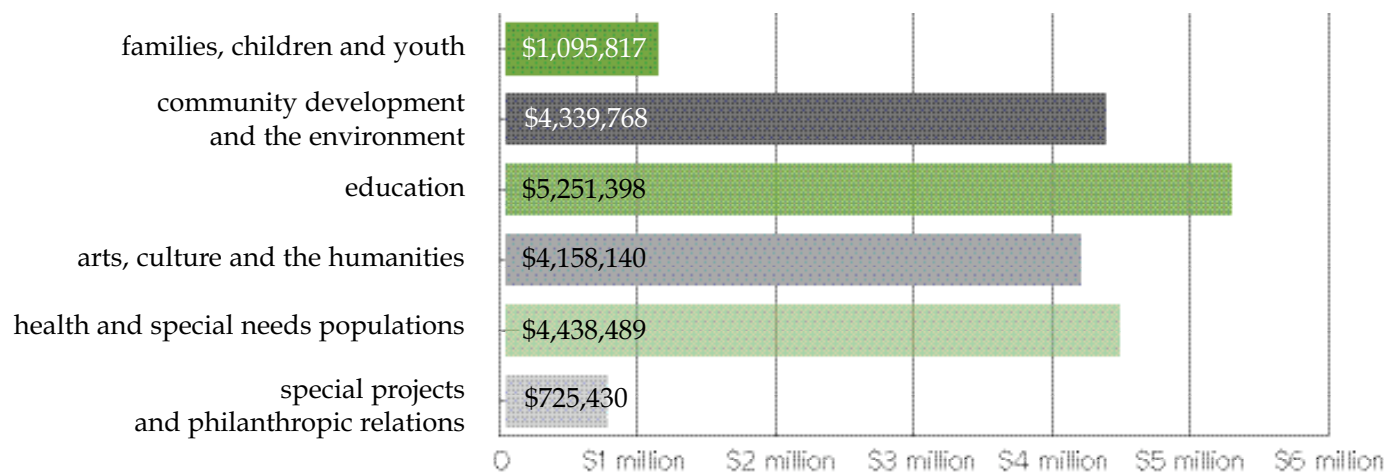
THE PITTSBURGH FOUNDATION, Parent Only

December 31, 2004 and 2003

ASSETS	2004	2003
Cash and cash equivalents	\$ 46,973,187	48,371,210
Investments, at market value	493,165,470	454,766,085
Accounts and interest receivable	1,539,827	1,362,072
Program-related loans receivable and investments	878,667	807,333
Contributions receivable	39,190,872	30,612,308
Property and equipment, net	914,052	1,041,499
TOTAL ASSETS	\$ 582,662,075	536,960,507
LIABILITIES AND NET ASSETS		
Grants payable, net	13,080,712	14,786,476
Accounts payable and other liabilities	2,686,044	3,471,618
Accrued pension liability	941,522	1,039,949
TOTAL LIABILITIES	16,708,278	19,298,043
NET ASSETS		
Unrestricted	25,657,164	25,477,603
Temporarily restricted	533,399,875	485,581,827
Permanently restricted	6,896,758	6,603,034
TOTAL NET ASSETS	565,953,797	517,662,464
TOTAL LIABILITIES AND NET ASSETS	\$ 582,662,075	536,960,507

SUMMARY OF GRANTS BY CATEGORY

For the year ended 12/31/04

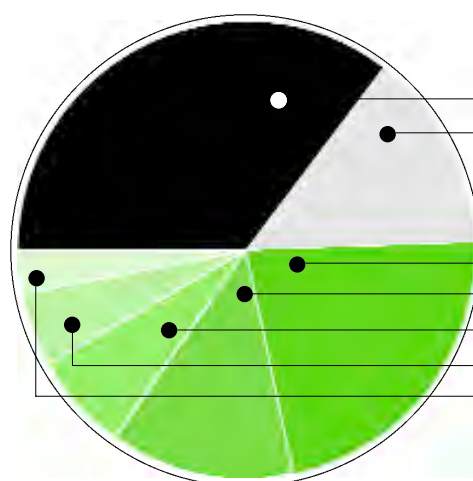


Financial information

COMBINED STATEMENTS OF ACTIVITIES
THE PITTSBURGH FOUNDATION, Parent Only
Years ended December 31, 2004 and 2003

REVENUES AND GAINS	2004	2003
Contributions	\$ 24,319,819	19,578,099
Investment income, net	11,154,769	9,332,622
Net realized and unrealized gains (losses) on investments	36,670,364	67,498,222
Actuarial adjustments on split interest agreements	1,952,867	4,155,253
Other	121,094	81,907
TOTAL REVENUES AND GAINS	74,218,913	100,646,103
EXPENSES AND LOSSES		
Grants approved, net	20,009,042	24,830,517
Grantmaking and related services expenses	2,333,213	2,375,910
Development and donor services expenses	1,756,389	1,746,447
Management and general administrative expenses	1,450,395	1,397,431
Other	378,541	348,064
TOTAL EXPENSES AND LOSSES	25,927,580	30,698,369
Increase (decrease) in net assets	48,291,333	69,947,734
Net assets at beginning of year	517,662,464	447,714,730
NET ASSETS AT END OF YEAR	\$ 565,953,797	517,662,464

The financial information presented has been derived from the Foundation's audited financial statements, copies of which may be obtained by contacting the Foundation at 412.391.5122.



ASSETS BY FUND TYPE

For the year ended 12/31/04

Undesignated	173,833,299	35%
Field of Interest	70,918,255	14%
	244,751,554	49%
Advised	111,227,246	23%
Designated	65,432,585	13%
Scholarship	36,374,014	7%
Medical Research	24,717,300	5%
Special Purpose	12,460,874	3%
	250,212,019	51%
	494,963,573	100%

Supporting organizations

The Pittsburgh Foundation is affiliated with seven supporting organizations with total assets of \$40,100,384.00. The supporting organizations are separate entities that are exempt under section 501(c)(3) of the Internal Revenue Code of 1986. Each qualifies for the highest federal income tax deduction as a public charity because its charitable activities complement and further the charitable activities of The Pittsburgh Foundation. While they are separate entities, The Pittsburgh Foundation handles all administrative issues for the supporting organizations, relieving the donors of any administrative burden.

- ⌘ *A supporting organization at The Pittsburgh Foundation is designed for families and individuals who want to maintain independence in charitable giving, while benefiting from the Foundation's grantmaking and financial services expertise.*
- ⌘ *Custom-tailored for endowments of approximately \$2 million or more, a supporting organization is a tax-exempt entity that offers you, as a philanthropist, the benefits of a private foundation, greater tax advantages available to a public charity, and the opportunity to engage in grantmaking decisions.*
- ⌘ *Whether you choose to give locally or outside the region, the services provided by The Pittsburgh Foundation release you from the burdens of state and federal reporting, and the numerous and expensive administrative tasks associated with running a private foundation. And you and your family are able to remain involved in perpetuity.*

A supporting organization also allows you to:

Select a money manager.

Your Board can decide who shall invest and administer the assets.

Pay reasonable administrative fees.

Our team of professionals assumes the responsibility for all filing and compliance requirements.

Establish your own grants budget.

You make charitable distributions as you see fit and are not limited to the Foundation's

grantmaking budget or spending policy.

Identify future trustees.

You leave a charitable legacy and keep decision-making within your family or with close associates, in perpetuity.

Avoid excise taxes and annual distribution requirements.

You are not required to distribute a specified amount each year (as private foundations are), so you make only the gifts that you are inspired to make.

Receive assistance from the Foundation's program staff.

Our professionals can share their in-depth knowledge of community needs and, if you choose, help you decide where your charitable dollars go.

Obtain due diligence reports from grant recipients.

Your gifts to 501 (c)(3) organizations will be monitored to ensure that your contributions are used according to your directives.

Giving now and in the future

On behalf of the Pittsburgh community, we would like to express our profound gratitude to all our generous donors. We would also like to thank the members of the Legacy Society for strengthening our community's future.

NEW FUNDS	Allegheny Financial Group/Allegheny Investments Fund	Ronald E. and Cora Alice Gebhardt Family Fund	Ligonier Valley Endowment/John R. and Helen L. Thorne Fund	RMK Fund
	Alzheimer's Disease Research Fund	Golden Tornado Scholastic Fund	Ligonier Valley Endowment/Edward and Mary Rea Weidlein Fund	James and Elin Roddey Fund
	Ruth F. and William E. Anderson Fund	James R. and Gretchen R. Haggerty Family Fund	Ligonier Valley Endowment/Vernie S. and John H. West Fund	Joyce L. and Eugene S. Root, III Charitable Fund
	Anonymous #5 Fund	John Knox Hall and LaVerne M. Hall Memorial Fund	J.W. Liken Family Fund	Dan and Bonnie Sandman Family Fund
	Chester R. and Florence K. Bernstein Memorial Fund	John and Anne Harmon Fund	John G. and Katherine P. Lovelace Family Fund	Shapira-Schmidhofer Family Fund
	Casey Family Charitable Fund	Joseph F. Hill Fund	Michael P. and Louise R. Malakoff Trust	Walter A. Sprengle Fund
	Children of Light and Hope Fund	Carolyn Howe Project Rediscovery Fund	Mankowski Family Fund	Donald W. and Dorothe P. Stechsulte Fund
	Matthew Conover Memorial Fund	Interboro College Club Fund	Jennie and Clarence Marshall Fund	Wilbur R. Stepp and Mary C. Stepp Fund
	Gregory and Simin Curtiss Family Fund	Paul F. Johns Fund	Carol and Joe Massaro Family Fund	Rosemary Trump Fund
	George and Ada Davidson Family Fund	Junior League of Pittsburgh Fund	McDowell Family Fund	Veterans Leadership Program of Western PA., Inc. Fund
	Mildred M. and Irwin J. Dean, Jr. Family Fund	Roslyn Kaplan and Family Fund	Micah Fund	John A. Vuono Family Fund in Memory of Carl and Rose Vuono
	Robert Dickey, III and Elizabeth B. Dickey Fund	Walter G. Kealey, Jr. Memorial Fund	Miles/Herron Family Fund	Waller Family Fund
	Gregory R. DuFour Charitable Fund	R. Drew and Mary S. Kistler Family Fund	Montour Trail Endowment Fund	Michael and Nancy Weissman Fund
	Byron K. Elliott Memorial Scholarship Fund	Ligonier Valley Endowment/Barbara Burke Artuso Memorial Fund	Sarah Kristin Owen Fund	Robert B. Wentworth Challenge Fund
	Hans and Leslie Fleischner Fund	Ligonier Valley Endowment/John and Catharine Cathey Fund	Chris and Susan Pappas Family Fund	Western Pennsylvania Medical Eye Bank Foundation Fund
	Laurabelle S. Gaitens Fund	Ligonier Valley Endowment/Richard W. and Helene S. Moore Fund	Pittsburgh Planned Giving Council Leadership Fund	Nancy and Charles Willard Fund
	Gay and Lesbian Focus Fund		William K. Plunkett Memorial Fund	A.D. and J.W. Wilson Fund
			Program Secretaries Community Fund	Shannon Wilson Charitable Fund



LEGACY SOCIETY

Anonymous (26)
 Alan and Barbara Ackerman
 Jack G. Armstrong
 Bernard C. Artman
 Ruth and James Bachman
 David C. Baker and Greta Ann Baker
 Richard W. Barker
 E. Peter and Lizzi Benzing
 Delbert H. Blose
 J. Vance and Alberta C. Boughner
 Jean G. Bowman
 Russell and Mary Brignano
 Elmore H. Broadhurst
 Fred C. and E. Maxine Bruhns
 Samuel T. Byron, Jr.
 Miles J. Cohen, J.D., C.F.A.
 Stanley G. Cohen
 Albert B. Costa
 Gretchen G. Donaldson
 Ashton and Joan Dunham
 Mrs. Jeanine R. Dunn
 Gladys and Arthur J. Edmunds
 Mrs. Craig F. Esterly
 Jill and Chad Frick
 Mildred M. Gerson
 Sally Weigler Golden
 David and Nancy Green
 Dr. and Mrs. Dwight C. Hanna
 Dr. Charles A. Harmeier, Jr.
 Worth M. Helms
 Dorothy Hill
 Thomas O. Hornstein
 Dr. and Mrs. Lawrence Howard
 Jack and Diane Hughes
 Joan Kaminski and children
 Joan M. Kaplan
 Louise and Chandler G. Ketchum
 Mary Jane Kidd
 William J. Knebel
 James T. and Hetty E. Knox

Melvin and Vivian Krall
 Sandy Kuritzky
 Carol K. Lampe and Sons, Grant and Jason Lampe
 Frank and Helen Lang
 G. Christian Lantzsch
 Lorna L. and Larry J. Lash
 Frank A. and Ruth S. Lowe
 Dr. and Mrs. George J. Magovern, Jr.
 Louise R. and Michael P. Malakoff
 Eugene A. and Peggy A. March
 Eugene J. Marchitelli
 Curtis R. and Helen B. Marquard
 Bruce R. McAvoy
 John R. and Margaret S. McCartan
 John and Dee McClay
 Norwood A. McDaniel

Henry C. and Belle Doyle McEldowney
 John R. and Joan V. Millar
 Mary Ellen and Raymond J. Miller
 Theresa Miller
 Lois Shope Mitsch
 Mercedes C. Monjian
 R. W. Moriarty, M.D.
 Susanne L. Morris
 Herb and Anna Jane Nicholas
 Mr. and Mrs. Thomas H. Nimick, Jr.
 Judge Raymond Novak
 Scott K. Noxon
 Robert F. and Virginia Patton
 William and Ingrid Rea
 Joseph L. and Suzanne B. Robinson Family
 Mr. and Mrs. Alvin Rogal
 Martha C. Roth

Dr. and Mrs. John M. Sadler
 Frank C. Schroeder, Jr.
 Jean Stalder
 Dr. Chauncey H. Steele
 Mr. and Mrs. Henry D. Sundermann, Jr.
 Dane M. Topich
 George Tozzi
 Mark H. and JoAnn T. Wainwright
 Dr. Janet Lois Walker
 Patricia H. Wettlaufer
 Carol S. Williams
 James D. Williams
 Margie Williams
 Burr and Barbara Wishart
 Sidney and Tucky Wolfson
 Karenmarie Young
 Lester E. and Ruth A. Zittrain



In memoriam

OUR SYMPATHIES AND CONDOLENCES GO TO THE FAMILIES
 OF THE FOLLOWING DONORS WHO HAVE PASSED AWAY IN 2004:

Dennis R. Dickson | John K. Hall | Emerson G. Hess, Jr., Esq. | Irene O. Kunin | Eugene March

Commitment and Experience

The Board of Directors of The Pittsburgh Foundation is composed of outstanding leaders from all sectors of the community, who focus on improving the quality of life in the region. The commitment, generosity and experience of our Board greatly enhance the mission and success of The Pittsburgh Foundation.

BOARD OF DIRECTORS

JAMES S. BROADHURST, Chairman of the Board of Directors of The Pittsburgh Foundation, is the Chairman and CEO of Eat' n Park Hospitality Group. He serves on the Board of Directors of the Allegheny Conference on Community Development and is a Trustee of The Pennsylvania State University. Mr. Broadhurst previously served as Chairman of the Board of Directors of Children's Hospital of Pittsburgh and of United Way of Allegheny County.

ROBERT P. BOZZONE is Chairman of Allegheny Technologies, Chairman of Water Pik Technologies, Inc., a Director of Teledyne Technologies Incorporated, and a Director of DQE, Inc. Mr. Bozzone is a former Chairman of the Pittsburgh Branch of the Federal Reserve Bank of Cleveland, and is a member of the Board of Trustees of Rensselaer Polytechnic Institute. He previously served on the Salvation Army Advisory Board and is former Chairman of the Board of the Greater Pittsburgh Council, Boy Scouts of America.

JOANNE E. BURLEY, Ph.D., is an Adjunct Professor in the School of Education at the University of Pittsburgh. She recently retired as the Campus Executive Officer of the McKeesport Campus of The Pennsylvania State University. She serves on the Board of Directors of The William J. Copeland Fund as well as the boards of the University of Pittsburgh Health System (UPMC) and Mt. Ararat Community Activity Center.

JOSEPH L. CALIHAN, Treasurer of the Board of Directors, is a Managing Partner in Bradford Capital Partners. He is Chairman of Bradford Schools, Inc., Median School for Allied Health Careers, Caldon Co., and Novum Pharmaceutical Research Services. Mr. Calihan serves on the Board of Directors of the Historical Society of Western Pennsylvania and the Extra Mile Education Foundation. He also serves on the Investment Advisory Committee of the Allegheny Conference on Community Development and the Advisory Council

of the Women's Center & Shelter of Greater Pittsburgh.

ESTELLE F. COMAY, Secretary of the Board of Directors of The Pittsburgh Foundation, is a partner in the law firm of Marcus & Shapira LLP. She serves as Chair of The William J. Copeland Fund, and also serves on the Board of Directors of The Pittsburgh Symphony, the Three Rivers Arts Festival, and on the National Board of Governors of the American Jewish Committee, among others. She has also served as past Chair of the Lawyers Committee of the Negro Education Emergency Drive and as a member of the Community Study Committee of the United Jewish Federation.

GREGORY D. CURTIS, is a Managing Director and Chairman of Greycourt & Co. Inc. Mr. Curtis is a past Chair and current member of the Board of Visitors and Governors of St. John's College in Annapolis, Maryland and Sante Fe, Mexico. He is also a past Chair and founding Director of The Investment Fund for Foundations.

GEORGE A. DAVIDSON, Jr., is the retired Chairman of the Board of Dominion Resources, Inc. He is a Trustee of The Pittsburgh Cultural Trust and the Carnegie Institute, a Director of the Civic Light Opera, and a member of the Board of Directors of the United Way of Allegheny County and of UPMC Presbyterian/Shadyside Hospitals. Mr. Davidson is a Trustee of the University of Pittsburgh, where he serves on the Board of Visitors of the Katz Graduate School of Business and of the School of Engineering.

LINDA A. DICKERSON is the founder of 501(c)(3)squared, a non-profit management consulting practice. She served as publisher of Executive Report magazine and as the Business Columnist for the Pittsburgh Post-Gazette. Currently Chair of the Greater Pittsburgh Phi Beta Kappa Association, Ms. Dickerson has been a prolific civic leader, chairing over one dozen community boards. She is particularly active on her alma mater's Board

of Trustees at Carnegie Mellon University.

JOHN C. HARMON is a partner at the law firm of Lovett Bookman Harmon Marks LLP, where he concentrates on estate and trust law. He is a member of the Boards of Trustees of The Linsly School and the Pittsburgh History & Landmarks Foundation, and serves on the Boards of Directors of the West Virginia University Foundation and the St. Margaret Foundation.

PETER F. MATHIESON is Managing Director and Executive Vice President with Guyasuta Investment Advisors, a Pittsburgh asset management firm that he helped to found in 1994. Previously, he was a Portfolio Manager with Scheetz, Smith & Company and an Investment Advisor with Parker/Hunter. A resident of Fox Chapel, where he lives with his wife, Carol and four children, Mr. Mathieson graduated from Bucknell University in Lewisburg, Pennsylvania in 1983 with a B.A. in Economics. Mr. Mathieson is also a Director of The Buhl Foundation, The Pittsburgh Cultural Trust, The Carnegie Hero Fund Commission and The Mentoring Partnership of Western Pennsylvania.

MARY LOU MCLAUGHLIN is a member of numerous Boards of Directors, including the Committee for Oversight in Organ Transplantation, International Women's Forum-Western Pennsylvania Chapter, Little Sisters of the Poor, The McGowan Institute for Regenerative Medicine, Pittsburgh Tissue Engineering Initiative, the UPMC/City of Pittsburgh Marathon, and WQED Pittsburgh. She is a former Executive Director of Family House and the former Director of Corporate Relations at the University of Pittsburgh Medical Center.

JAMES C. RODDEY held the position of Chief Executive of Allegheny County from 2000 to 2004 and he will always have the distinction of being the first elected to that office. Many years in the public sector preceded his election as Chief Executive, including four years as Chairman of the Port Authority

Transit and five years as Chairman of the Pittsburgh Water and Sewer Authority. His work in private industry includes the Presidencies of Turner Communications Corporation and Rollins Communications Corporation. In the nonprofit arena, Jim has served as President or Chairman of numerous pillars of the Greater Pittsburgh community: the Eye & Ear Institute, Pittsburgh Blind Association, Three Rivers Arts Festival, Pittsburgh Public Theater, United Way of Allegheny County, Pittsburgh Clean City Committee, Pittsburgh Three Rivers Regatta, and WQED Pittsburgh.

EDITH L. SHAPIRA, M.D., has a private practice in general psychiatry, which she has maintained since 1991. Edie is active in a variety of endeavors in health care, and she also maintains an active life in community service. She serves on the Joint Boards of Directors for Presbyterian and Shadyside Hospitals, and has held a variety of roles in UPMC system. She is the Co-chair of the Riverlife Task Force, and she also serves on the Board of Directors and Steering Committee of A+ Schools.

GREGORY R. SPENCER is the former Senior Vice President and Chief Administrative Officer of Equitable Resources, Inc. He is a trustee of Robert Morris University and Bethel A.M.E. Church. Mr. Spencer also serves on the Boards of Directors of the Urban League of Pittsburgh, Boy Scouts of America, the Institute of Transfusion Medicine, Education Policy and Issues Center, Pittsburgh Mercy Health System, Negro Educational Emergency Drive (NEED), and the African American Chamber of Commerce.

NANCY D. WASHINGTON, Ph.D., Assistant Secretary of the Board of Directors of The Pittsburgh Foundation, is an Associate Professor Emerita and a former Assistant to the Chancellor of the University at the University of Pittsburgh. She is a member of the Board of Directors of Girls, Inc., the Frick Arts and Historical Center, Point Park University and the



Women's Committee of the Carnegie Museum of Art. Dr. Washington is a member of the Executive Committee of The Pittsburgh Cultural Trust, as well as President of the Board of Directors of the Pittsburgh Child Guidance Foundation.

AARON A. WALTON, Vice Chair of the Board of Directors of The Pittsburgh Foundation, is Senior Vice

President of Strategic Community and Health Initiatives at Highmark, Inc. He is active in many organizations and institutions including California University of Pennsylvania, Gateway Health Plan, the Health Education Center, the Youth Crime Prevention Council of Allegheny County, the Allegheny County Human Services Oversight Committee and the Lifestyle Advantage Board of Managers.

ROBERT B. WEBB is Chief Operating Officer with Tucker Arensberg, P.C., a 70-attorney law firm based in Pittsburgh. He also serves as Adjunct Professor at H. John Heinz III School of Public Policy and Management at Carnegie Mellon University where he teaches public leadership. Previously, he worked with the Allegheny County government for 24 years, most recently as County

Manager following the County government's reorganization in 2000. Mr. Webb - also an official scorer for Major League Baseball - has a law degree from Duquesne University, and he graduated from the University of Notre Dame with a B.A. in government. Mr. Webb and his wife, Cheryl, live in Indiana Township, Pennsylvania. They have three sons.

DIRECTORS EMERITI

WILLIAM J. COPELAND is a Director Emeritus of The Pittsburgh Foundation, as well as a retired Vice Chairman of PNC Financial Corporation. He is founding Vice Chairman of the Health Education Center, and Chairman Emeritus of Family House and of the Civic Light Opera. Mr. Copeland is a co-founder and Vice President of the National Flag Foundation and Director Emeritus of St. Clair Memorial Hospital.

DOUGLAS D. DANFORTH is a Director Emeritus at The Pittsburgh Foundation. He is also a Director of Sola International, Inc., and Envirosource, Inc. He is the retired Chairman and Chief Executive Officer of the Westinghouse Electric Corporation. Mr. Danforth is also the

past Chairman of the Board of the Pittsburgh Pirates. He is also past Chairman of the Board of Carnegie Mellon University and continues to serve as a Life Trustee of the University. Mr. Danforth also serves as a Trustee of Syracuse University.

ARTHUR J. EDMUNDS, Director Emeritus of The Pittsburgh Foundation, is the former Executive Director of the Urban League of Pittsburgh. He currently serves on the Board of Directors of the Pittsburgh History and Landmarks Foundation, the Regional Industrial Development Corporation of Southwestern Pennsylvania, the Health Education Center, and the Caring Foundation, and he is an Emeriti Board member of the Western Pennsylvania

Allegheny Health Care System. Mr. Edmunds served on the Presbyterian-University Hospital's Committee for Oversight in Organ Transplantation and on the Board of Directors of Lemington Home for the Aged.

ALVIN ROGAL, Director Emeritus of The Pittsburgh Foundation, is Chairman of Hilb, Rogal and Hamilton Company of Pittsburgh. He is a Director and founding Chairman of the Jewish Healthcare Foundation, as well as past President and current Director of the United Jewish Federation and past President of Montefiore Hospital Board of Trustees. Mr. Rogal serves as a Director of the Jewish Community Center of Greater Pittsburgh, is a Fellow of Brandeis University, a Robert

Morris University Board Trustee, and a Carnegie Mellon University Life Trustee.

DOROTHY R. WILLIAMS is a Director Emerita of The Pittsburgh Foundation. She is a life member of the Board of Directors of Planned Parenthood, and formerly served as a member of the national board and as President of the Pittsburgh chapter. Ms. Williams is a founder and former President of Women's Health Services, a former Trustee of Pikesville College and Shadyside Presbyterian Church, former Director of the Fox Chapel Country Day School, and a former member of the Board of Directors of The Children's Home of Pittsburgh.

Advice and guidance

The Pittsburgh Foundation is deeply grateful for the thoughtful advice and guidance provided to us by our community-based Advisory Committees.

ALZHEIMER'S DISEASE RESEARCH FOUNDATION

George A. Davidson, Jr
Jaqueline C. Morby
Jeffrey L. Morby
Edith L. Shapira, M.D.
William E. Trueheart

CAHOUET CHARITABLE TRUST

James S. Broadhurst
Frank V. Cahouet
George A. Davidson, Jr.

DONOR LEADERSHIP COMMITTEE

Barbara Ackerman
Peter Benzing
David D'Appolonia
Larry Heller
Chandler Ketchum
Carol Lampe
Cassie Lyon
Mike McCaig
Richard Moriarty
Martha Raak
Nancy Staible

ENDOWMENT FOR BUTLER COUNTY

Jim Beck	Matt Marshall
Amy Beiler	Robb McKinney
Joyce Bessor	Joanie Miller
Kirby Campbell	Dick Musko
Linda Harvey	Nick Norante
Larry Henry	Michael J. Pawk
Patti-ann Kanterman	Donald Santora
Brett Ligo	Bill Starr

INDIANA COUNTY ENDOWMENT

Jack Bennett
Larry Catlos
Chad Frick
Carson Greene, Jr.
Florence L. Helwig
Rev. Roger Petersen
Wallace E. Putt
James A. Shertzer
Michael J. Supinka, Esq.
Louie Tate
Robert O. Warren
Scott G. Weber

INSIDE STORY COMMITTEE

Leo Castagnari
Greg DuFour
Carol Henderson
Judith Thomas
Elizabeth Wainwright
John Woffington
Judith Woffington

LIGONIER VALLEY ENDOWMENT

Ralph K. Bennett
Susan S. Bennett
L.L. (Toby) Biddle, III
Daniel B. Fritz
Cathy M. Etchen
Penny P. Gessner
Ryan M. Glista
R. Duane Hall
George J. Kondor, Jr.
Robert F. Smithley
Arhur M. Scully, Jr.
John R. Thorne
Anne M. Urban
Ronald Wagner
Mary R. Weidlein
John C. Whipkey



MEMBERS OF SCHOLARSHIP ADVISORY COMMITTEES

Eric Asongwed	Craig Esterly	Florence Johnson	H. Sheldon Parker, Jr
William Balsinger	Helen Faison	Kenneth Keeling	Elizabeth Reiss
Beverlee Blair	Peggy Ferber	Michael Louik	Gail Shrott
Delphina Briscoe	Edward Friedman	Louise Malakoff	Morton Stanfield
Rosemary Crawford	Ted Goldberg	Eugene Matta	Donna Vlassich
Cornelia Davis	Walter Goldberg	Ngula Mbao	Lee Walls
Westlynn Davis	Peter Herchenroether	Harold Miller	Lance Whiteman
Jo DeBolt	Dorothy Hill	Rosa Copeland Miller	Judith Woffington
Gretchen Donaldson	Edgar Holtz	Eileen Morris	
Janice Edwards	Laurence Howard	Sylvester Pace	

R.P. SIMMONS FAMILY
CHARITABLE TRUST

James S. Broadhurst
David L. McClenahan
Amy P.S. Sebastian
Richard P. Simmons
Nancy D. Washington

USHER FAMILY FOUNDATION

Robert P. Bozzone
George A. Davidson, Jr.
Gregory R. Spencer
Sandra L. Usher
Thomas J. Usher

WISH BOOK COMMITTEE

Daniel Abehouse
Kristin Abeshouse
Vicki Halloran
Kitty Hillman
Nancy Wolf

The Pittsburgh Foundation is grateful to the following advisors who referred donors to our organization in 2004:

Allegheny Financial Group, Ltd.
Larry S. Blair, Esquire
Mark Bookman, Esquire
Dorothy L. Boyer
William H. Brown, Jr., CFP
Thomas E. Couch, CFP
Michele McPeak Cromer, Esquire
Adam P. Davidson, CFP
Gordon D. Fisher, Esquire
Ward L. Garner, CFP

William E. Goehring, Esquire
Thomas A. Keiser
Kurt E. Kimmich
David H. Kropp, Esquire
Lawrence F. Leventon, Esquire
Robert G. Lovett, Esquire
Luttner Hamilton Group
Dennis G. McNamara, C.W.A.
Thomas R. Moore
Lawrence N. Paper, Esquire

Pittsburgh Planned Giving Council
PNC Advisors
Nancy Rackoff, Esquire
Paula A. Rummell, CPA
Todd A. Sacco
James M. Sadowski
Robert D. Sebastian, Esquire
Peter M. Tumbas
Stuart W. Valen

The Pittsburgh Foundation staff

Presidents Office

PATTI L. LARDIN
Executive Assistant to President and CEO

LAUREN MIKUS
Administrative Assistant
and Research Specialist

RICHARD W. REED JR.
Executive Vice President

WILLIAM E. TRUEHEART
President and CEO

Development and Donor Services Department

KRISTIN DEANGELIS
Director of Development, New Funds

WILLA DUKES
Administrative Secretary
for Development and Donor Services

KIMBERLEY HAMMER
Vice President for Development
and Donor Services

JOCELYN THOMPSON
Donor Services Officer

DEBORAH TURNER
Scholarship Coordinator

KELLY URANKER
Donor Services Associate

JAN VISH
Administrative Assistant to Vice President
for Development and Donor Services

ARLENE VUKAS
Administrative Secretary for Development
and Donor Services

Program and Policy Department

MARLENE ALPERN
Administrative Secretary to Program Officer

JANE DOWNING
Senior Program Officer

ANNETTE GREEN
Senior Program Officer

GERRI KAY
Vice President for Program and Policy

NADINE LEVITT
Administrative Secretary to Program Officer

JEANNE PEARLMAN
Senior Program Officer

VALERIE PEARSON
Administrative Secretary to Program Officer

JENNIFER STEINMETZ
Administrative Project Assistant
to Vice President for Program and Policy

TALITHA WRIGHT
Administrative Secretary to Program Officer

Finance Department

VALERIE ATTINA
Accountant

JONATHAN BRELSFORD
Director of Information Technology

BARBARA BROOKS
Grants Administrator

BETH FARMER
Accounting Assistant

MARY HALEY
Administrative Secretary-Finance

THOMAS HAY
Vice President for Finance

JAMES MORRISEY
Human Resources Director

JUDITH POWELL
Grants Assistant/Administrative Secretary

DOT SIKORA
Financial Associate

MARY WILSON
Controller

Communications Department

JOHN ELLIS
Vice President for Communications

STEPHANIE HIGGINS
Communications Assistant

Supporting Organizations The Forbes Funds

GREGG BEHR
President

DIANA BUCCO
Senior Program Officer

AMY THOMAS
Executive Assistant to President

LESLEY WILLIAMS
Knowledge Management Officer

The Multicultural Arts Initiative

DEMEATRIA BOCCELLA
Program Associate
for Multicultural Arts Initiative

CHARLET HOLLEY
Administrative Secretary

ANNUAL REPORT PRODUCED BY BENDING OAK PUBLISHING
PHOTOGRAPHY BY JOSHUA FRANZOS

Did you know...

- That over **1,000 donors** have entrusted The Pittsburgh Foundation with the management of their charitable dollars?
- That The Pittsburgh Foundation has **400 donor advised funds** that grant throughout the United States?
- That an IRA or other qualified retirement plan is an **excellent asset** to use as a deferred gift to The Pittsburgh Foundation?
- That The Pittsburgh Foundation offers its donors more than **25 educational programs and site visits** each year?
- That by naming The Pittsburgh Foundation as beneficiary of an IRA or qualified retirement plan assets at death, donors and heirs may save up to **70% in combined estate and income taxes**?
- That The Pittsburgh Foundation provides individualized **grant making assistance**?
- That donors may receive an **immediate income tax charitable deduction** by naming The Pittsburgh Foundation irrevocably as the owner and beneficiary of a life insurance policy?
- That The Pittsburgh Foundation **accepts complex assets as charitable gifts**, including real estate and restricted or closely held securities?
- That The Pittsburgh Foundation granted more than **\$20 million** in charitable dollars in 2004?



THE PITTSBURGH
FOUNDATION

One PPG Place, 30th Floor • Pittsburgh, Pennsylvania 1522-5401

Telephone 412.391.5122 • Facsimile 412.391.7259
email@pghfdn.org • www.pittsburghfoundation.org

Nonprofit Org
US Postage
PAID
Pittsburgh, PA
Permit #1044